

Sam Khoury, DDS MS

Diplomate-American Board of Periodontology

Juan C. Cabrera, DMD MS

Diplomate-International Congress of Oral Implantology

Fixed Dentures-“All on 4, 5 and 6”

1



2



3



4



The All on 4, and All on 5 and 6 Dental Implant

Procedure uses 4, 5 or 6 implants, with the back implants angulated to take maximum advantage of existing bone. Special connections have been also developed that could support the immediate fitting of replacement teeth. This treatment is attractive to those with dentures or in need of full upper and/or lower restorations. The patient comes to the office in the morning with unhealthy (or no) teeth, and leaves in the afternoon or gets on the next day a beautiful set of fixed, functional teeth. (See Images 1, 2, 3, 4)

Process:

With the All on 4 and All on 5 or 6 procedures, qualified patients receive a few implants and a full set of new temporary replacement teeth in just one appointment. The real appeal is how quickly permanent implants can be placed so that patients can have fixed, non-removable temporary replacement teeth.

1. The patient has one or two visits to his/her general dentist office to allow them to gather information for a treatment plan (e.g., X-rays, impressions, photos).
2. Dr Khoury will also gather some information including a CT scan to diagnose, plan the location of the dental implants, and then make surgical guides. The patient is then scheduled for surgery by Dr. Khoury.

Images 1-4: Illustration of the Fixed Denture Process

Sam B. Khoury DDS MS™

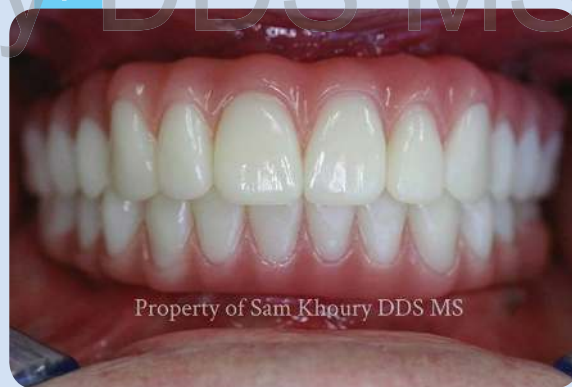
- On the same day of surgery or on the next day, the new “temporary fixed teeth” are then fitted by Dr. Khoury or your general dentist. This is used by connecting the dental implant to the temporary denture using special abutments “Pre fabricated abutments” that are secured to the dental implants by Dr. Khoury. (See Image 5)

Image 5: Prefabricated abutments-Connections between the dental implant and the Fixed Denture

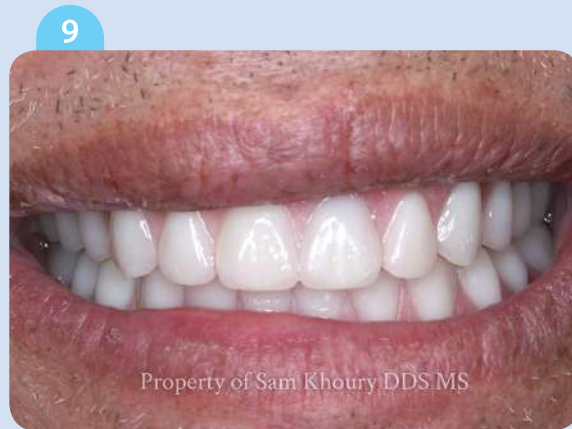


The patient will return for occasional check-ups over the next several weeks and months.

- After almost four-six months, and when the gums have fully healed and the implants are fused to the natural bone, your general dentist will take new impressions of the patient’s mouth and prepare a final, stronger, *permanent* set of teeth. This helps ensure that the teeth will last for decades, and provides maximum support, beauty, and function to the patient. (See Images 6, 7, 8, 9 for some examples)



Images 6 and 7: Before and After



Images 8 and 9: Before and After